

**S.B.H.S. MEMBERSHIP
APPLICATION & RENEWAL**

___ New ___ Renewal

Name _____

Address _____

City _____ State _____

Zip _____ Telephone _____

Email _____
(Please include your email address.)

This is a gift membership from : _____

Membership Levels:

- Individual \$20.00
- Family/Library 25.00
- Senior (age 65) 10.00
- Student 10.00
- Business 50.00
- Lifetime 250.00
- Donation _____

Please make checks payable to South Brevard Historical Society and mail to P.O. Box 1064, Melbourne, FL 32902-1064.

The South Brevard Historical Society, Inc., is a non-profit corporation and an IRS 501 (C) 3 organization. All contributions are tax-deductible by limits of law. A copy of the official registration and financial information may be obtained from the Florida Division of Consumer Services by calling 1-800-HELP FLA.



South Brevard Historical Society, Inc.
Founded 1966

P.O. Box 1064, Melbourne, Florida, 32902-1064

www.southbrevardhistory.org

January 2011

PLEASE JOIN US

Saturday, January 8th

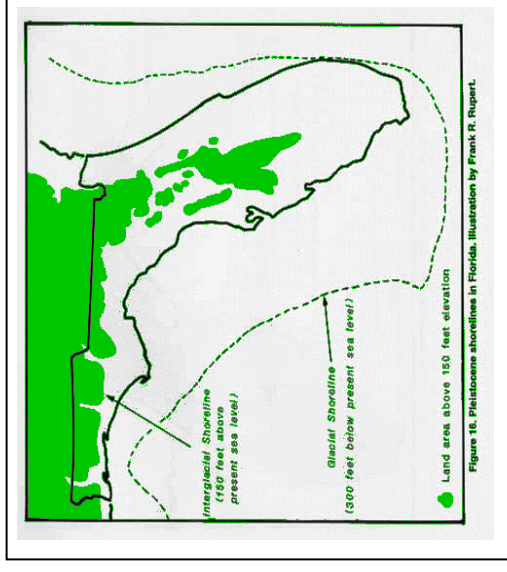
3 PM

Melbourne Public Library

540 E. Fee Avenue, Melbourne

**Florida's Atlantic Coast:
Past,
Present,
and Future**

A Presentation by Randall W. Parkinson, Ph.D., P.G.



Dr. Parkinson's lecture will discuss the geologic history of Florida's eastern coastline over the past 120,000 years as a means of understanding what changes are likely as our climate warms. Topics of discussion will include the cause and effect of Pleistocene ice ages on Florida's Atlantic coast, the origin and evolution of barrier islands, coastal erosion, and the effects of climate change and sea-level rise.

Thank you to John Fergus for arranging the speaker and information for this program.

SBHS ANNUAL BUSINESS MEETING

A brief Annual Business Meeting of the SBHS will be held just prior to our program on January 8th. On the agenda is a passage of the 2011 budget and election of officers. Please refer to your December Newsletter for the board nominations and the proposed budget.

Only members may vote on the agenda items. Membership is based on the calendar year and are due by January 1st of each year. Please note: If your Newsletter mailing label does not have an "11" or a "C" after your name, we do not have a record of your 2011 dues payment. If you have paid for the 2011 year but do not have an "11" after your name, please call 725-4115.

SOUTH BREVARD HISTORICAL SOCIETY
 P. O. Box 1064
 Melbourne, FL 32902-1064

DEAR MEMBERS AND FRIENDS.....
It's time to give out thanks for all who helped make 2010 a successful year for the SBHS. THANK YOU TO:

Our Program Speakers who shared their knowledge and experience.

Membership who provided ideas and support throughout the year.

Those who donated when paying dues or contributed in-kind, such as AAA Malabar Storage.

Folks who donated items for our yard sale and those who came out and worked that day.

The other "history organizations" in Brevard who cooperated and collaborated with us.

All who helped with our "collection" and displays and events such as Fall for the Arts".

THANK YOU TO A GREAT, HARD WORKING 2010 BOARD - it was my pleasure to serve with:

Vice President Barbara Arthur
Secretary Ann Flotte/Sandy Wilson
Treasurer Kathi Harbaugh

Directors:
Shirley Baccus
Diane Barile
Jill Berry
Denise Bozeman
John Fergus
Patsy Oliphant
Ed Vosatka

WE ALL WISH YOU A VERY HAPPY AND HEALTHY NEW YEAR!

Carol Andren, President SBHS 725-4115

2011 Dues: One More Reminder

SBHS dues are based on the calendar year and are due January 1st of each year. If you paid by December 31st of 2010, you should have an "11" after your name on your newsletter mailing label. If you have a question, you may check on your payment at the next program meeting or phone 725-4115.

The SBHS thanks AAA Malabar Mini-Storage, located across the street from the Malabar Town Hall, for their generous donation of air-conditioned secure storage for the Society's collections and archives.

SBHS CALENDAR

FEBRUARY 12 3 PM

General Meeting A Close Look at The Wells House/Green Gables by John Daly
Melbourne Public Library, Fee Avenue
MARCH 12

We celebrate Florida Archaeology Day more information to come in the February Newsletter.
APRIL 9 3 PM

The Ozaki Family of Eau Gallie by Sandy Wilson
Melbourne Public Library, Fee Avenue
MAY 14 3 PM

Rufus Beaujean of Melbourne Beach by Frank Thomas
Melbourne Public Library, Fee Avenue

Around Brevard

Melbourne/Eau Gallie

Historic Rosetter House Museum & Gardens

GHOST TOURS - First Friday nights beginning in February
\$10 per person
1320 Highland Avenue in the Eau Gallie Arts District of Melbourne
phone: 254-9855 for reservations

Palm Bay

LAGOON HOUSE

The Marine Resources Council of East Florida
3275 Dixie Hwy (US 1) on the Indian River Lagoon, just south of the Honda dealership.
Exhibits, activities and programs on the science and history of the IRL.
Open 9-5 Mon-Fri 9-1 Sat
Admission is free.

For more information phone: 321-725-7775

FPAN and the Florida Historical Society

Friday, January 14th 7-8 PM

Bones of the Seythians

Dr. Rachel Wentz will discuss results of the examinations of two skeletons excavated from the Alesandropol burial mound in southern Ukraine
Florida Historical Society headquarters, 435 Brevard Avenue in Cocoa Village.
For information phone: 321-690-1971.

Melbourne Beach History Center

Come by to see the new "old" look added to the entrance of the center by Boy Scout Troop #314 and Scout Dante Alvarez. Some improvements are the installation of a rain barrel system, some new plantings and improved shell walkways. History of Melbourne Beach from the Ais Indians to the present.
2373 Oak Street (across from Spessard Holland Golf Course) Melbourne Beach Open Saturdays 11-3
For more information call 321-676-0660.



Introducing our Speaker

Randall W. Parkinson, Ph.D., P.G

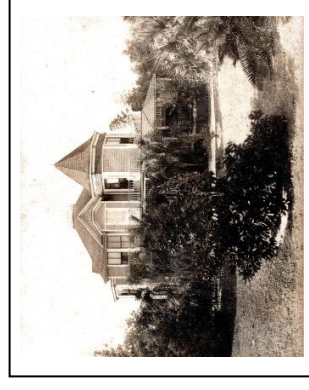
Randall W. Parkinson is president of *RWParkinson Consulting, Inc.*, a firm specializing in geological issues associated with the management and protection of coastal resources. He received a BS in Environmental Science from Cornell College (1979), MS in Geology from the University of Iowa (1982), and Ph.D. in Marine Geology and Geophysics from the Rosenstiel School of Marine and Atmospheric Science, University of Miami (1987).

He is an Eagle Scout, Fulbright Scholar (visiting professor, University of Costa Rica, San Pedro), NASA Summer Faculty Fellow, Registered Professional Geologist (State of Florida), chairman of the Selection and Management Committee/Brevard County Environmentally Endangered Lands Program (1990 to present), and Associate Editor of the Journal of Coastal Research.

Prior to starting his own business in 2006, Parkinson was an Associate Professor of Geological Oceanography at the Florida Institute of Technology (1987 – 2000) and thereafter employed as a Senior Geologist and Laboratory Director of a Florida coastal engineering firm (2000 – 2006)

In December 2007, Dr. Parkinson launched the *Space Coast Climate Change Initiative* (SCCCI). The Space Coast Climate Change Initiative (SCCCI) was established to facilitate local government implementation of plans, policies, and/or actions to address global climate change. Towards that goal, the SCCCI is initially promoting assessments of municipal vulnerability and adaptive management of the built and natural environment as the best means to ensure resilience during 21st Century sea level rise.

Preview: of our February Program:
Green Gables at Historic Riverview Drive
Saturday, February 12th



You won't want to miss this up close and personal view of Melbourne's historic Well's House, also called Green Gables because of the distinctive architectural features.

John Daly, attorney and historic preservationist will share his research, photos, and his fascination for this treasure located in the Riverview Village neighborhood.

Watch our website: southbrevardhistory.org for scheduled guided walks along Melbourne's historic Riverview Drive.

Kellersberger Fund Publications

The following books published by the *SBHS Kellersberger Fund* are available for sale by the *SBHS*: **Tales of Old Brevard**, by Georgiana Kjerulff, **Rooted in Florida Soil**, by Julia Lake Kellersberger; **Historic Florida: A Closer Look at the Photographs of a Century Ago In Three Dimensions**, by Clement Slade; **Troubled Paradise: Melbourne Village, Florida**, by Georgiana Kjerulff; and **Pineapples are Never Black or White**, by Harry Goode, Sr.

Books are usually available for purchase at our monthly meetings.