

**S.B.H.S. MEMBERSHIP
APPLICATION & RENEWAL**

___ New ___ Renewal

Name _____

Address _____

City _____ State _____

Zip _____ Telephone _____

Email _____
(Please include your email address.)

This is a gift membership from :

Membership Levels:

Individual	\$20.00
Family/Library	25.00
Senior (age 65)	10.00
Student	10.00
Business	50.00
Lifetime	250.00
Donation	_____

Please make checks payable to South Brevard Historical Society and mail to P.O. Box 1064, Melbourne, FL 32902-1064.

The South Brevard Historical Society, Inc., is a non-profit corporation and an IRS 501 (C) 3 organization. All contributions are tax-deductible by limits of law. A copy of the official registration and financial information may be obtained from the Florida Division of Consumer Services by calling 1-800-HELP FLA.



South Brevard Historical Society, Inc.

Founded 1966

P.O. Box 1064, Melbourne, Florida, 32902-1064

www.southbrevardhistory.org

December 2011

PLEASE JOIN US

Saturday, December 10th
3:00 P M

Melbourne Public Library
540 E. Fee Avenue, Melbourne

If you remember movies at the Van Croix,
....swimming at the Wells Park pool.....the
Bahama Beach Club.....Pop's Casbah,
you won't want to miss.....

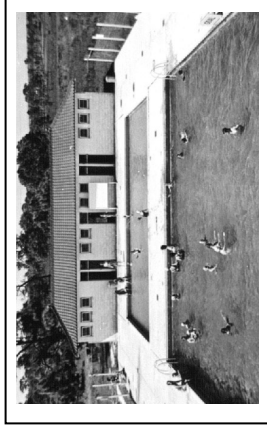


Photo courtesy of Karen Raley

GROWING UP IN MELBOURNE:

**A Conversation with Kitty Hay Fletcher and Diane Berg Sheffield
Moderated by Brevard County Historian, Weona Cleveland**

Diana Berg Sheffield and Kitty Hay Fletcher were both born in Melbourne in 1932. They grew up as best friends, graduating from Melbourne High School in 1950 (before the school moved to Babcock Street.)

The Bergs moved to Melbourne from Sanford, where R.H. Berg owned a newspaper. In Melbourne he became owner and publisher of the Melbourne Times. Diana had three brothers, all older than she.

Just about the time Dr. Hay opened the (Brevard) hospital, the Great Depression hit the country. According to his wife, Lucille, in an interview in 1980, "we lost our shirts".

But Dr. Hay's foresight provided an incentive for Melbourne to build a community-supported hospital on U.S. 1, about a mile north of the first hospital. The new Brevard Hospital was opened in the spring of 1937, with Dr. Hay as chief of staff.

Diana and Kitty share their memories of growing up in Melbourne.

IT'S TIME FOR MEMBERSHIP DUES

The SBHS membership is based on the calendar year, January 1-December 31st. You may pay at the December meeting or mail them to the SBHS, POB 1064, Melbourne FL 32902-1064

SOUTH BREVARD HISTORICAL SOCIETY

P. O. Box 1064
Melbourne, FL 32902-1064

Dear Members and Friends.....

While thinking about this month's column, I reflected on the previous month of November and thought about that theme of giving thanks. To me, December has always been a month of hope. Whether one celebrates the religious holidays and their significance, partakes in the more secular rounds of parties and feasts, or just enjoys the Santa present idea, we think about others and how we can make them happy.

And.....while we are wishing each other a "joyous", a "merry", and a "happy" celebration, the wish for "peace on earth" and "goodwill toward men (and women)" emerges - every year. The hope would be that we could figure out how to give the gifts of "peace" and "goodwill" as gifts that last the whole year through - like a magazine subscription.

The Officers and Directors of the SBHS wish you a JOYOUS HOLIDAY SEASON.

Carol Andren,
Co-President, SBHS (725-4115)

About our Moderator

WEONA CLEVELAND

Ms. Cleveland is best known for her special feature columns on local history published in the *Melbourne Times* (later *FI Today*). She is widely respected for her historical knowledge resulting from her extensive research and personal interviews. She was appointed Honorary Brevard Historian by the Brevard County Commission in 2006.

SPECIAL HOLIDAY EXHIBIT AT THE OLD TOWN HALL HISTORY CENTER

2373 Oak Street (across from Spessard Holland Golf Course) Melbourne Beach
Open Saturdays 11-3
For more information call 321-676-0660.

The beautiful Zonta Club Christmas ornaments will be featured beginning Saturday, December 3rd. Each ornament represents a historical place and introduces this year's "Rocket Garden at Kennedy Space Center". You may purchase ornaments at Meehan's Office Products in downtown Melbourne. The project benefits the club's scholarship fund and other entities.

SBHS CALENDAR

JANUARY 14th 3 PM

Annual Business Meeting and Program Meeting
Melbourne Public Library, 540 E. Fee
Program: Postcards from Paradise:

150 Years of Florida as Eden
A Presentation with Slide Show and Postcard Displays
by Karen Raley

FEBRUARY 11th 3 PM

Melbourne Public Library, 540 E. Fee

Program: We salute Women's History Month with "Eau Gallie's Fabulous Rossetter Sisters" presented by Ben DiBiase (FHS)

Around Brevard

Melbourne/Eau Gallie

Historic Rossetter House Museum & Gardens

Located at 1320 Highland Avenue

The Eau Gallie Arts District of Melbourne.

\$5/person regular four times

For more information: 321-254-9855

Grant Historical House

View this 1916 "cracker" house decorated for the holidays. 5795 U.S. Highway 1, Grant Valkaria
For a schedule and more information: 321-723-8543

FPAN and the Florida Historical Society

Florida Historical Society headquarters,

435 Brevard Avenue in Cocoa Village

321-690-1971

Friday, December 15th 7 pm

FPAN Fall Lecture Series

EXPLORING ANCIENT FLORIDA - Dr. Rachel Wentz

Millions of years ago, the peninsula that would become Florida broke from the coast of Africa, settling into its present location. Since then, its landscape as gone from an African-like savannah to a tropical paradise. Ancient mega-fauna that once roamed the forests and grasslands disappeared as humans arrived. Come see what Florida was like for the earliest Native Americans.

Books make great gifts!!!

Among the Kellersberger books for sale are **Pineapples are Never Black or White**, by Harry Goode. **St. and Historic Florida: A Closer Look at the Photographs of a Century Ago** in **Three Dimensions**, by Clement Slade are available for sale. **Publications at most SBHS monthly meetings**

**SBHS Annual Business Meeting
January 14TH 2012**

REPORT OF THE NOMINATING COMMITTEE

Slate of Nominees for Election Jan 2012

Officers:

(One year terms)

President - Carol Andren

V. President - Jill Berry

Secretary - Sandy Wilson

Directors: two year terms

Denise Bozeman

John Fergus

Ed Vosatka

Directors: one year terms

Diane Barile

Barbara Arthur

NOMINATIONS MAY BE MADE FROM THE FLOOR WITH PRIOR CONSENT OF THE NOMINEE.

Board Members Continuing:

Treasurer - Kathi Harbaugh

Directors: Dory Fredrickson

Patsy Oliphant

Thank you to the Nominating Committee for their work: Ann Downing, Marlinda Wyatt, and Nancy de la Morinierre.

HELP WANTED:

If you have worked with archival material, we need your help as we reorganize the "items" and "records" of the Collection.

Call Ed Vosatka (259-2133) to volunteer.

VOLUNTEERS WILL BE NEEDED:

Plans are in the works for a SBHS Home Tour in the spring. Please mark March 3rd on your calendars. More details in the January Newsletter

The SBHS thanks AAA Malabar Mini-Storage, located across the street from the Malabar Town Hall, for their generous donation of air-conditioned secure storage for the Society's collections and archives.

SBHS PROPOSED BUDGET FOR 2012

INCOME

Memberships Dues \$1,000
Donations

Storage (In-kind) 1,980
Other 100

Fundraising

House Tour 2,500
House Tour Sponsorships 900
Website Sponsorship (prepaid thru 2013) -0-

Other

Disposition of Storage Items 25
Interest on Accounts 5

Kellersberger Fund 212

From Reserves 985

TOTAL INCOME

\$6,807

EXPENDITURES

Annual Recognition \$ 100
Archives & Collection

Storage 3,960
Supplies 200

Exhibits 100

Dues/Fees

Brevard Cultural Alliance 75

Florida Corporation Filing 70

Florida Permit to Solicit 10

Fundraising

House Tour 500

General Administration

Post Office Box 60

Postage & Supplies 100

Bank Charges 20

Other 50

Hospitality

Kellersberger Fund 50

Florida Sales Tax 12

Membership

Miscellaneous Expenses 25

Special Event 100

Programs

Public Relations/Communication

Website (prepaid thru 2013) -0-

Newsletter Printing 500

Newsletter Postage 600

Supplies 50

Publicity/Promotion

Brochure 100

Miscellaneous Expenses

25

TOTAL EXPENDITURES

\$6,807

Prepared by Carol Andren, Barbara Arthur, and Kathi Harbaugh.